



TRANSFER
TELLURIDE

SAN JUANHOUSE

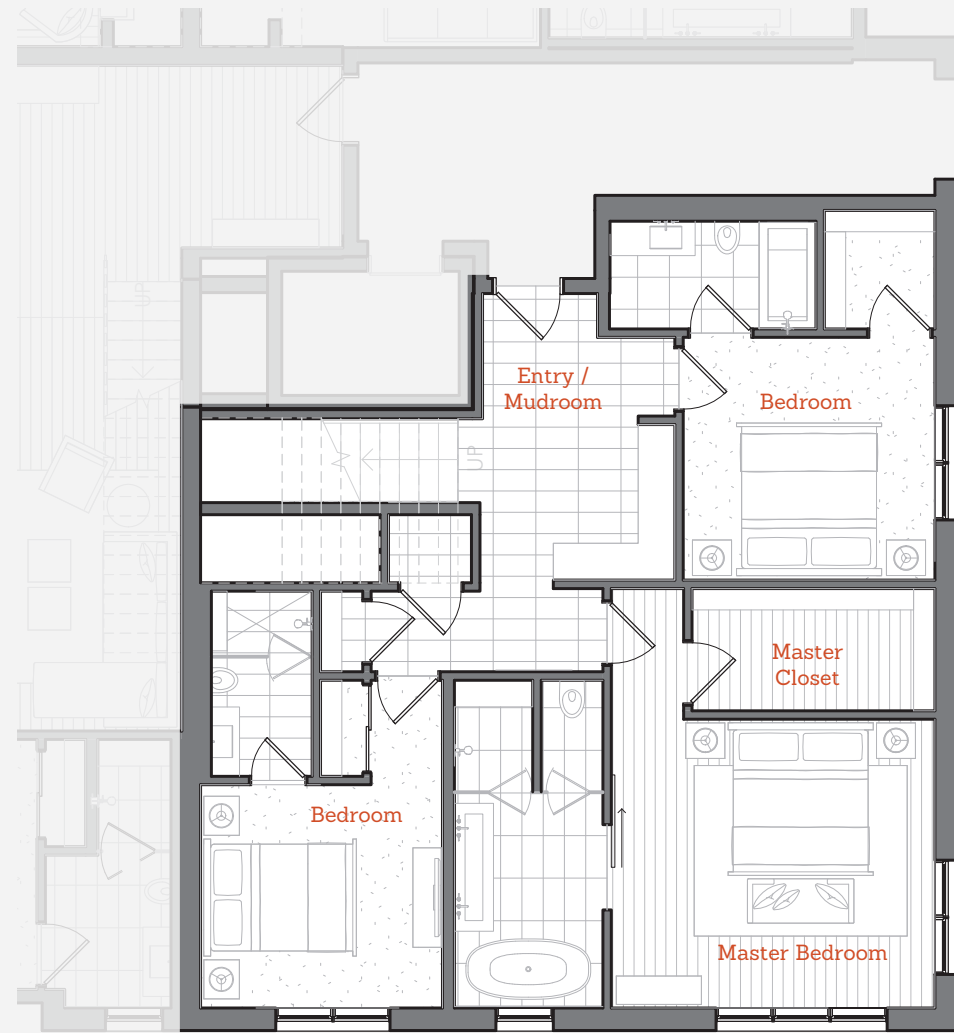
ONE

4 BEDROOM : 4.5 BATH : 2,398 SQFT
\$4,250,000

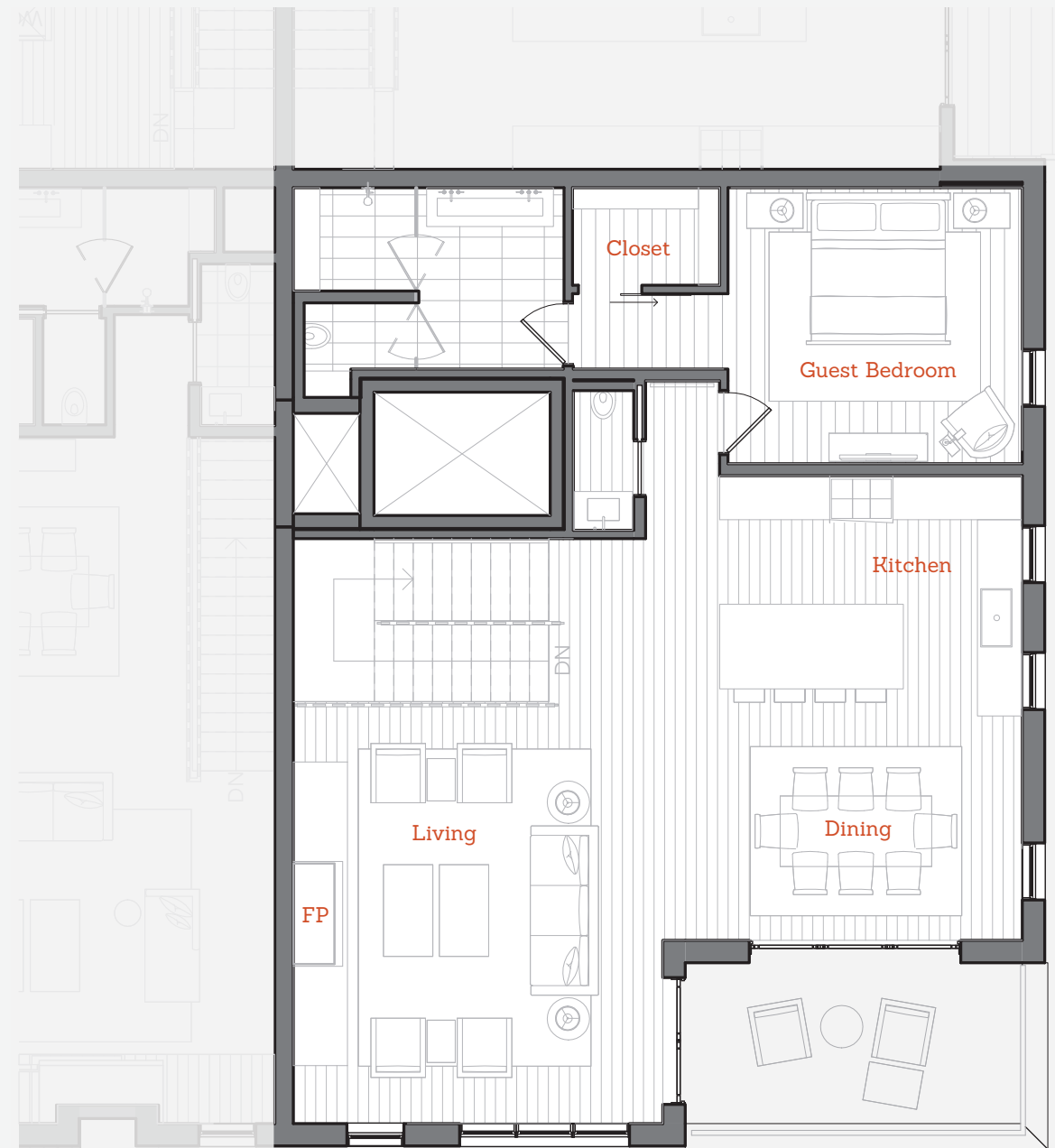
The Residences of Transfer Telluride were designed with respect to the property and Telluride's historical context. The rich materials and textures utilized draw from the surrounding historical district, while the thoughtfully selected architectural elements serve to elevate the project past an imitation of history.



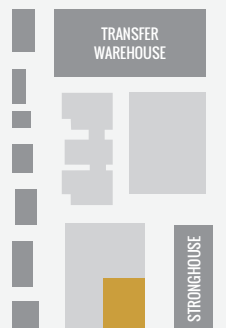
GROUND FLOOR



SECOND FLOOR



Pacific Avenue



San Juan Avenue

All features, dimensions, drawings, conceptual renderings, plans and specifications are subject to change without notice, and Developer expressly reserves the right to modify, revise or withdraw any or all of the same in its sole discretion. Pictures and renderings are Artist Representations and are not necessarily an accurate depiction. All improvements, design and construction, are subject to first obtaining appropriate permits and approvals. All prices are subject to change without notice.



CCY ARCHITECTS

“With Transfer Telluride we wanted to create something that responds to Telluride’s historical context, especially in regards to the richness of materials and textures found throughout town. At the same time we didn’t want the finished product to simply imitate the past, and are really pleased that the result feels fresh and forward looking yet still respectful of other buildings in the historic district.

Inside we wanted to create unique residences that lived like single-family homes. A driving force for the interior layouts was to capture a diversity of Telluride’s panoramic scenery, giving future owners the opportunity to enjoy both indoor and outdoor views of the San Juans, Bridal Veil Falls and Telluride Ski Area.”

RICH CARR
CCY Architects

TRANSFER TELLURIDE HIGHLIGHTS

- 12 new construction residences ranging from 2,300 sqft to over 4,200 sqft
- 3, 4 and 5+ bedroom options. Prices starting at \$2.85mm
- Paramount location: steps to the gondola and Colorado Ave.
- Design that maximizes valley and ski mountain views from every residence
- Generous outdoor living spaces
- Thoughtfully designed architectural elements, including artful steel and wood stairways
- Refined mountain-modern interiors with premium custom finishes
- Open-concept living with large kitchen islands and great rooms
- Spa-inspired bathrooms
- Enclosed parking and ample storage